



**GUST**  
**MAP FOR**  
**ACCESSIBLE**  
**NAVIGATION**

**GUST**  
**2024**

**GUST**  
Gulf University for  
Science & Technology

# GUST

Map for Accessible  
Navigation



**GUST**  
Gulf University for  
Science & Technology

**Gulf University for  
Science and Technology  
2024**

## **Table of Contents**

Introduction .....	2
Written Map for Accessible Navigation .....	2

# GUST

## Map for Accessible Navigation



**GUST**  
Gulf University for  
Science & Technology

**Gulf University for  
Science and Technology  
2024**

## Introduction

The Disabilities Navigation Map is an essential resource designed to enhance accessibility and inclusivity for all members of the university community, particularly those with disabilities. This map provides detailed information about accessible routes, entrances, elevators, ramps, and other facilities crucial for individuals with mobility challenges, visual impairments, or other disabilities. By clearly marking these features, the map helps students, faculty, staff, and visitors navigate the campus with greater ease and independence. It not only supports compliance with accessibility standards but also reflects the university's commitment to creating an environment where everyone can participate fully in academic and campus life.

### Written Map for Accessible Navigation

This written map ensures that disabled students can navigate the university campus effectively. It highlights key accessible routes, entrances, elevators, and restrooms, providing clear guidance for moving between different areas of the campus. This information can be distributed digitally or printed to ensure all students and visitors have access to it.

#### 1. Entrance to the Campus:

- **Main Entrance (Circle Drive)**
- Accessible Parking: Parking Lot 0 is the nearest to the main entrance. Accessible parking spaces are clearly marked in blue.
- Wheelchair Accessible Route: Upon entering, follow the blue wheelchair accessible route from Lot 0 to the Arts & Sciences building (Building A).





## 2. Moving to Key Buildings:

- **Arts & Sciences (Building A)**
- Accessible Entrance: Enter through the accessible building entry located on the west side of Building A.
- Elevator Access: The elevator is located near the entrance and provides access to all floors.
- Restrooms: Accessible restrooms are available on each floor, with signage indicating locations.
- **From Arts & Sciences to the Academic Building (Building E):**
- Wheelchair Accessible Route: Follow the marked wheelchair accessible route eastward, crossing Circle Drive. Use the ramp near the Unified Science Center (Building B) to access the Academic Building.
- Accessible Entrance: The entrance on the north side of Building E is equipped with an automatic door.
- Elevator: Located near the main lobby, providing access to all floors.
- **From Academic Building to Campus Center:**
- Pathway: Exit Building E and head south along the accessible route. This path is direct and well-marked, leading you to the Campus Center.
- Accessible Entrance: The Campus Center entrance is located on the north side, with a ramp leading up to the door.
- Elevator: Immediately inside the entrance to the left.
- Restrooms: Accessible restrooms are located on each floor, with an all-gender option available.
- **Unified Science Centers (Buildings B & C):**
- Wheelchair Accessible Route: Move eastward along the accessible route from the Campus Center.
- Entrances: Accessible entries are located on the south sides of both Unified Science Centers.
- Elevators: Elevators are present near the main lobby areas inside both buildings.

## 3. Moving Between Buildings:

- West Quad to Sports Center (Building G):
- Wheelchair Accessible Route: Follow the path westward from the Campus Center. The route is level and leads directly to the Sports Center.
- Accessible Entrance: The Sports Center entrance is on the north side, with an automatic door.
- Elevator: Located near the reception desk inside the entrance.

## 4. Accessible Restrooms:

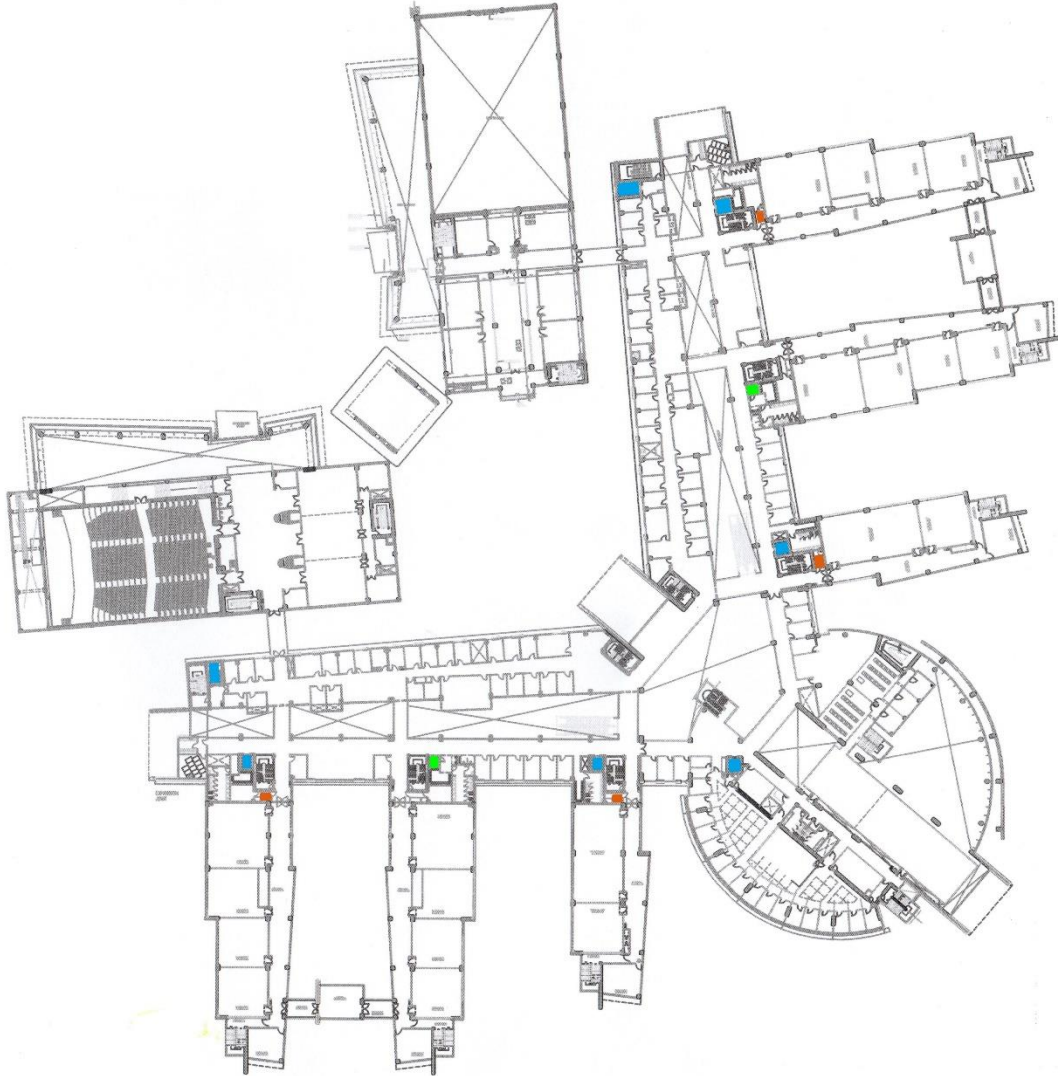
- **Restroom Locations:**



- Campus Center (Building F): Restrooms are available on each floor, with accessible options clearly marked.
  - Unified Science Centers: Accessible restrooms for men and women are located on each floor.
  - Sports Center: Restrooms are near the elevator, with all-gender accessible options available.
- 5. Housing Area (TRLC and Housing Buildings 2 & 3):**
- Wheelchair Accessible Route: Follow the accessible route north from the Campus Center to reach the housing areas.
  - Accessible Entrances: Each housing building has accessible entrances with ramps and automatic doors.
  - Elevator Access: Elevators are available near the main entrances, providing access to all floors.
- 6. Emergency Exits and Safety:**
- Emergency Exits: Clearly marked on the map, all buildings are equipped with accessible emergency exits leading to safe zones outside.
  - Safety Call Stations: Located along the accessible routes, these call stations allow direct communication with campus security.
- 7. Additional Services:**
- Campus Shuttle: Accessible shuttle services are available, with stops at key locations like the Circle Drive entrance, Campus Center, and housing areas.
  - Campus Accessibility Office: Located in the Campus Center (Building F), ground floor, near the main lobby.



# First Floor - Phase 1

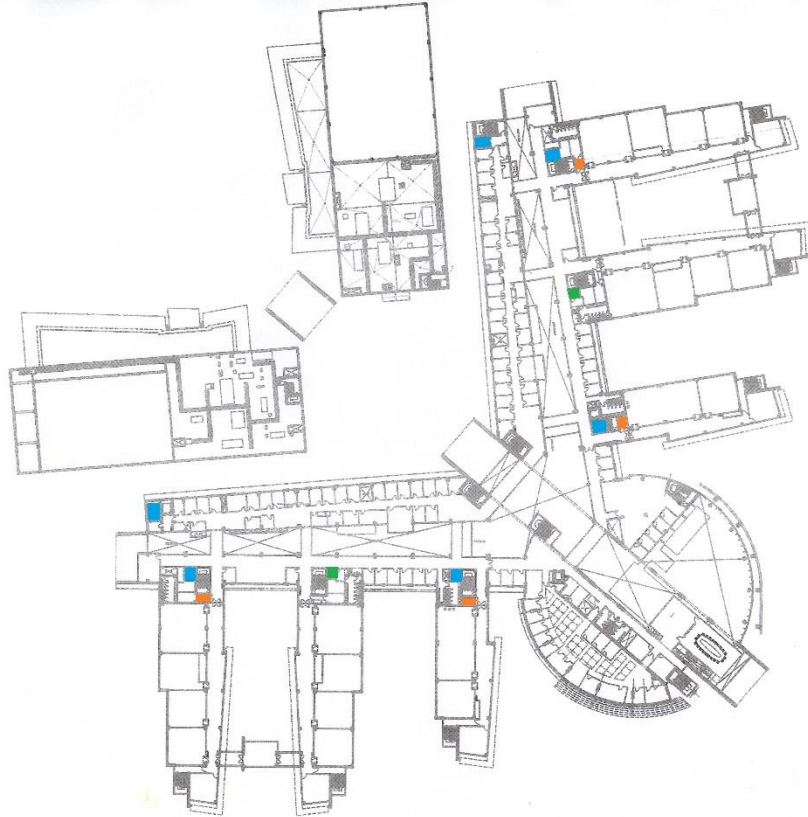


- ELEVATOR
- TOILET
- WHEELCHAIR





- ELEVATOR
- TOILET
- WHEELCHAIR



## Second Floor - Phase 1



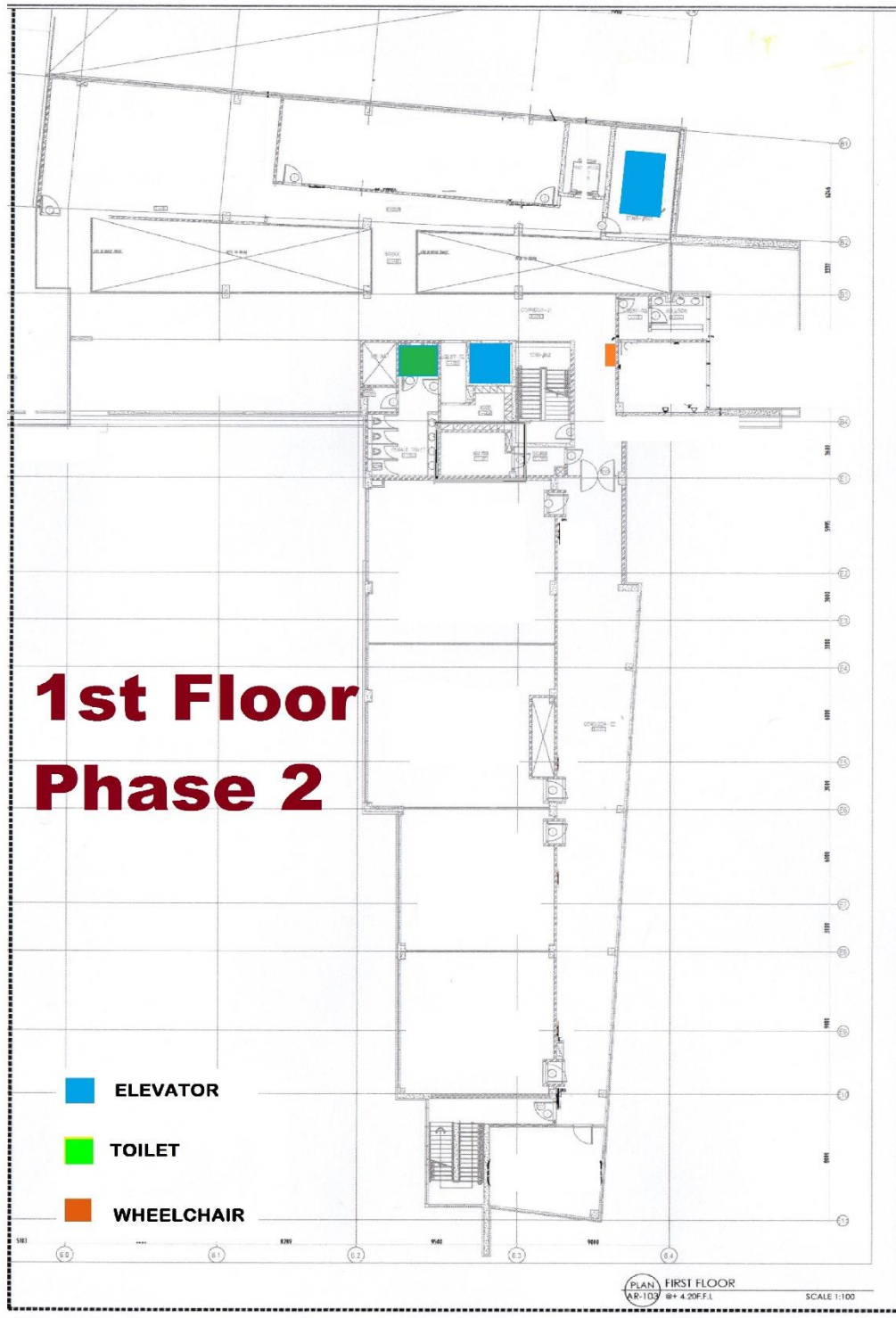
## Ground Floor - Phase 1



- ELEVATOR
- TOILET
- RAMP
- WHEELCHAIR
- CLINIC

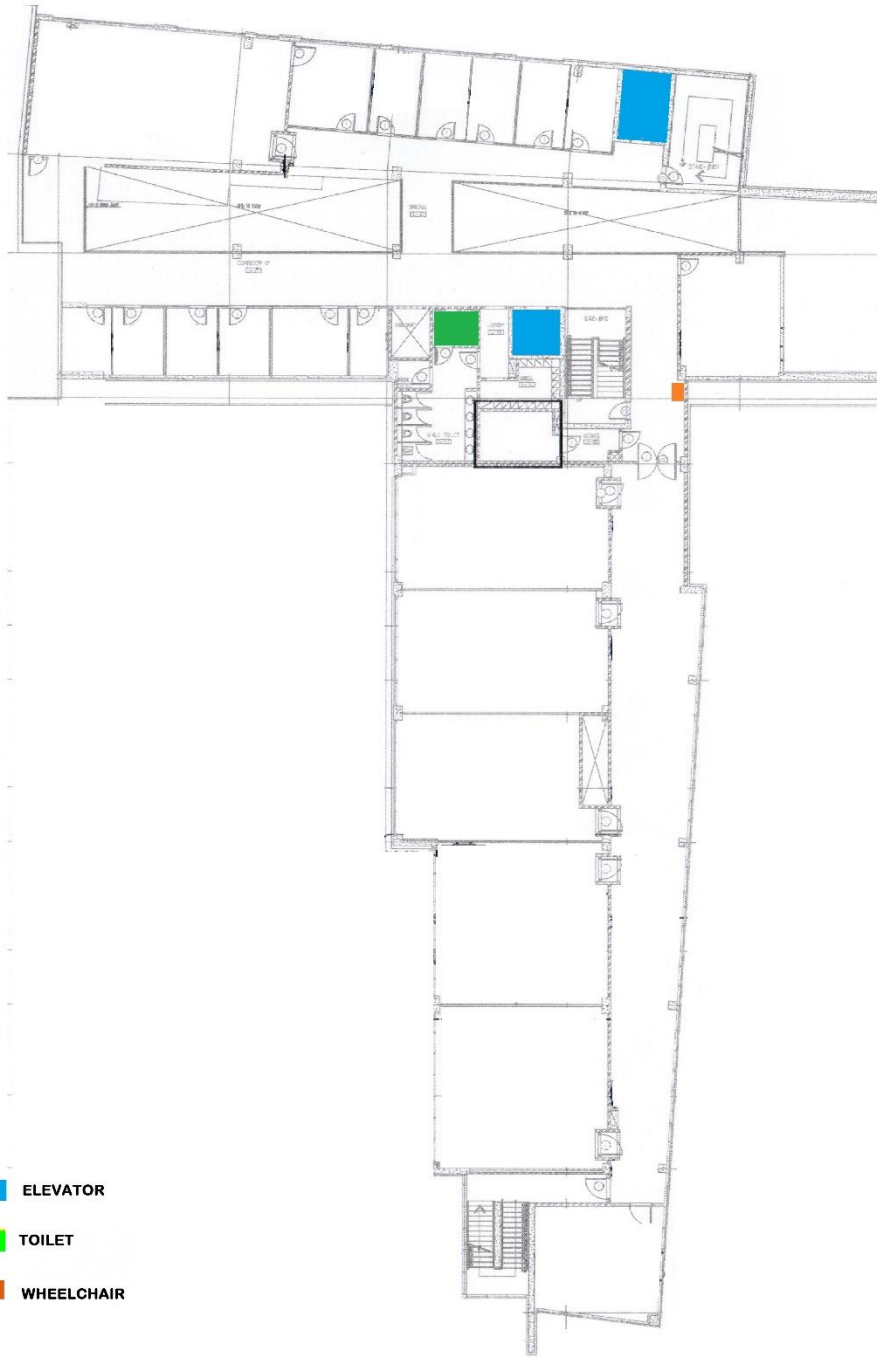








## Second Floor - Phase 2

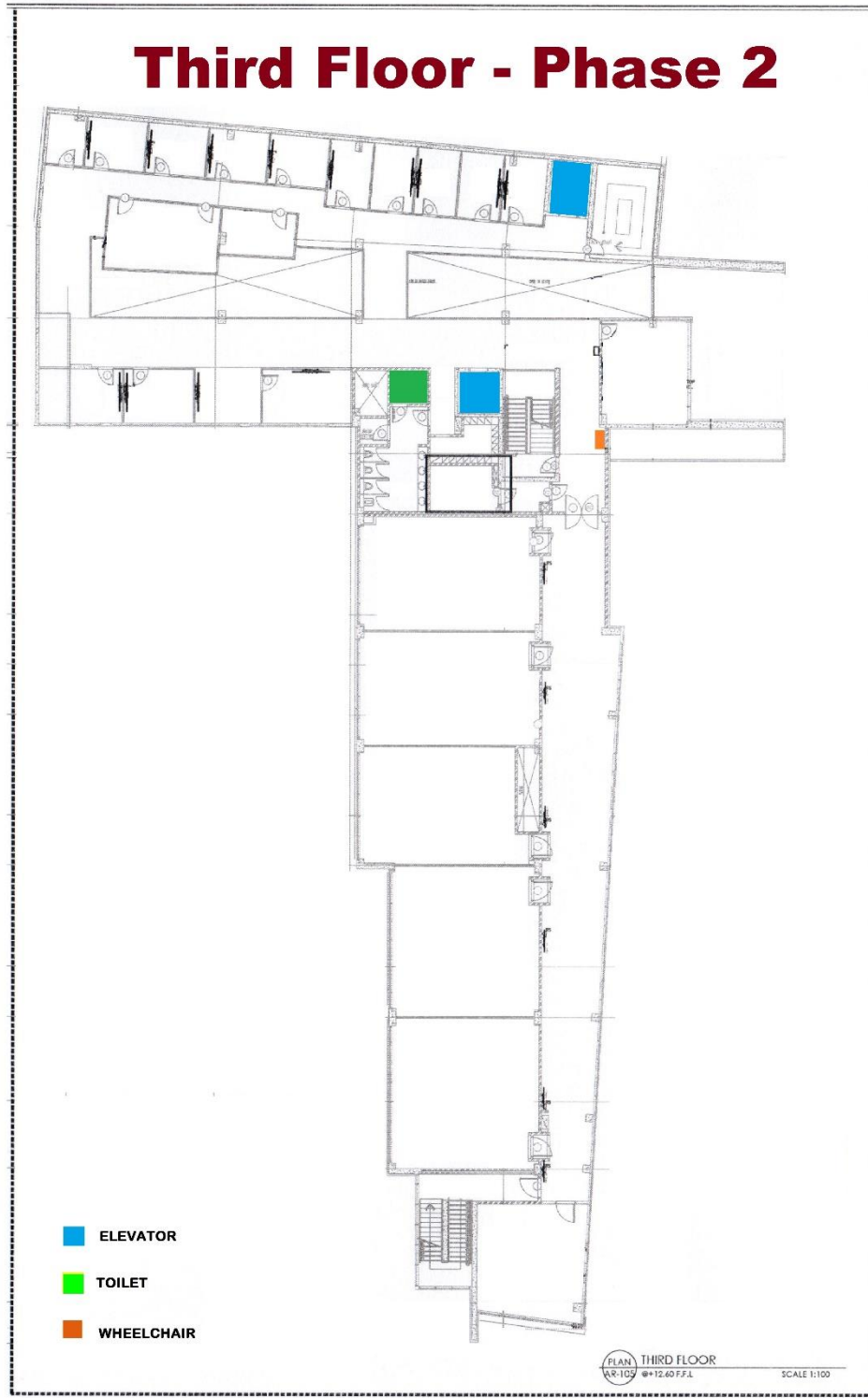


- ELEVATOR
- TOILET
- WHEELCHAIR

PLAN SECOND FLOOR  
AR-109 @+8.40 F.F.L. SCALE 1:100

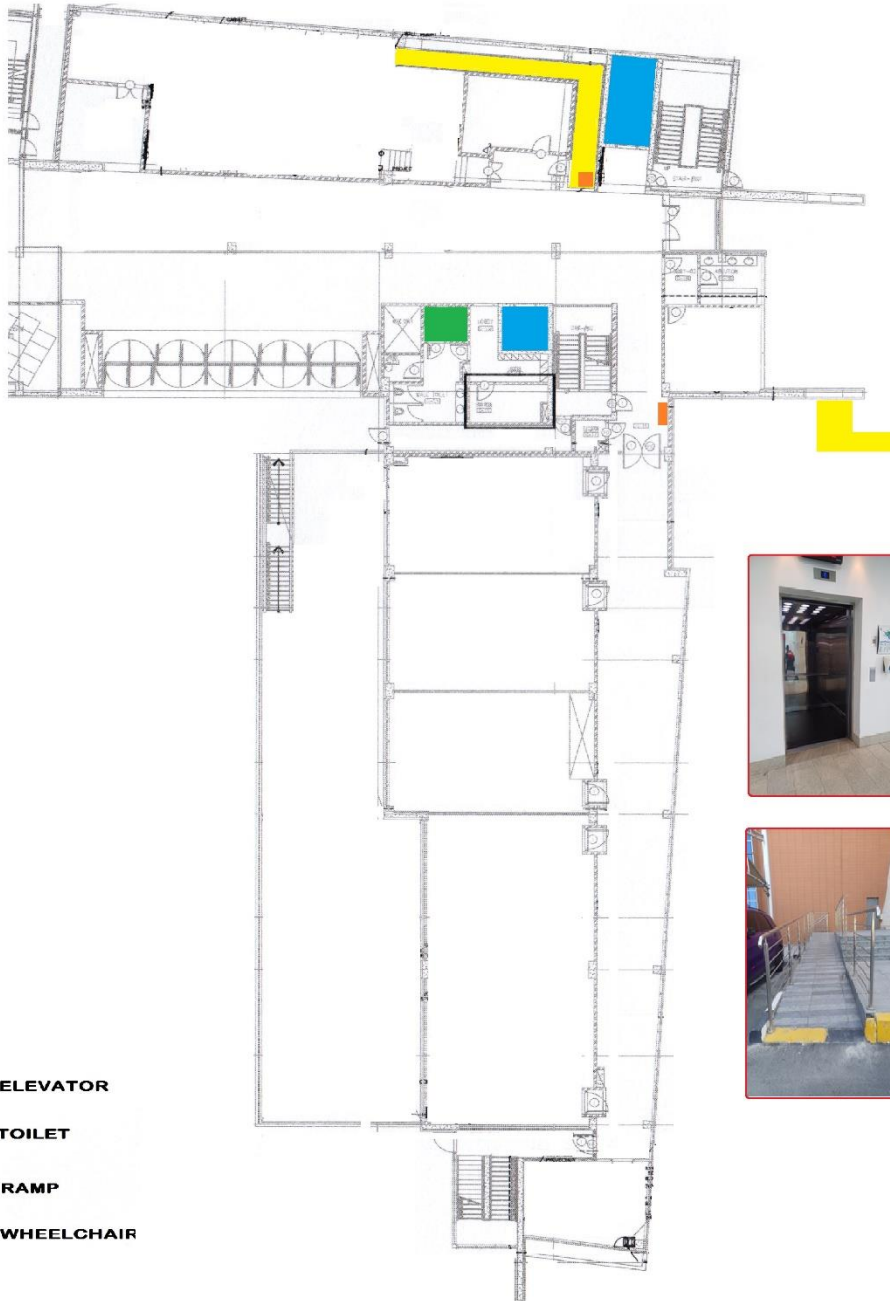


## Third Floor - Phase 2





## Ground Floor - Phase 2



- ELEVATOR
- TOILET
- RAMP
- WHEELCHAIR



PLAN GROUND FLOOR  
AR-102 @±0.00 F.F.L. SCALE 1:100